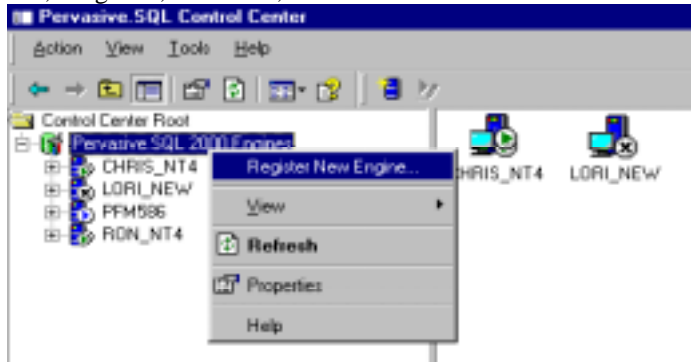


Access for Pervasive 2000, Service Pack 2 Configuration NT or Novell SERVER

How to set up Access:

Step 1. From a work station

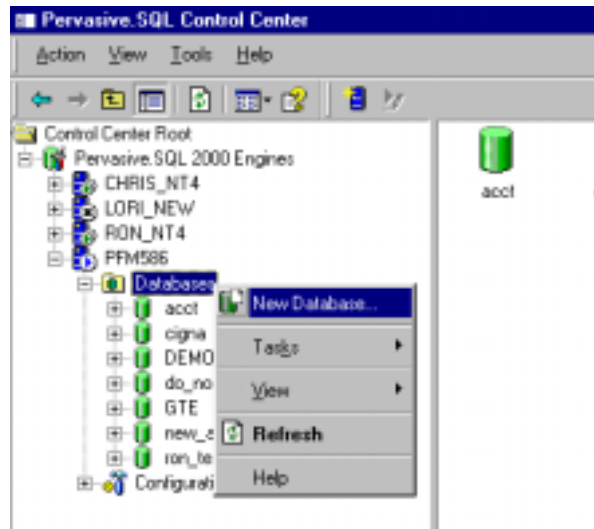
Start, Programs, Pervasive, Pervasive Control Center



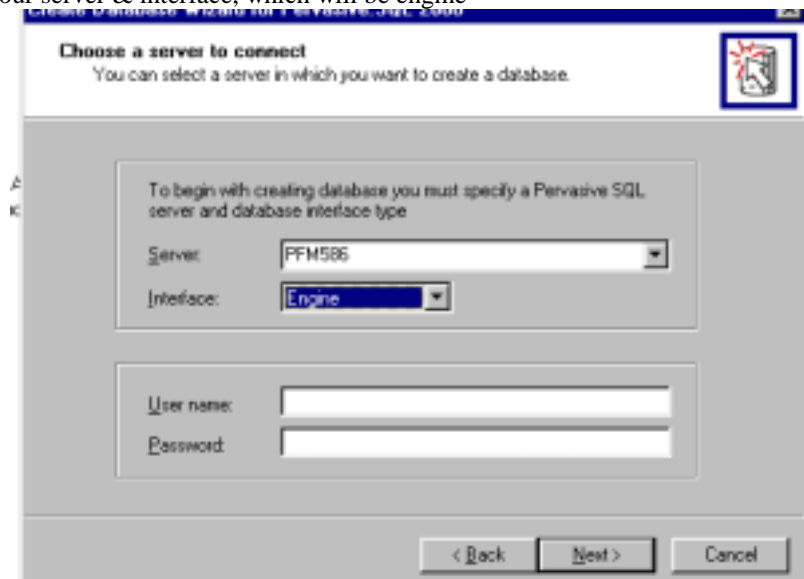
Computer Name: enter the server name

The server will then be added

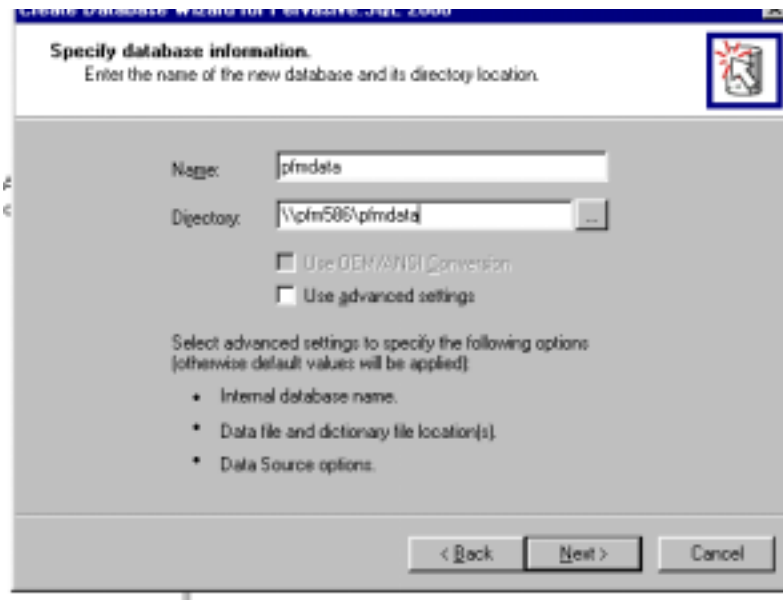
Step 2. Add a new database



Select your server & interface, which will be engine



- Type in user name & password (administrative)...click next
- Step 3. Name: PFMDData
 Directory: the root of pfmdata
 Click next



It should be complete after you click finish

- Step 4. LOCAL WORKSTATION
 Open Control Panel → 32 bit ODBC Driver

In the “Create New Data Source” window:
 Switch to the “SYSTEM DSN” tab
 Click “Add” to add a new data source
 Select “Pervasive ODBC Client Interface”
 Click “Finish”

- Step 5. In the “Pervasive ODBC Client DSN Setup” Window:
 In the field “Data Source Name” type “PFMDATA” (without quotes)
 Server section Address: Domain name OR IP address
 Data Source Name: Click “GET DSN List”
 Click “Test” – should come back ok
 Click OK

- Step 6. Open Access 97
 Create a new database
 Select file → “Get External Data”, “Link Tables”
 In the box that says “Files of Type”, drop down the list and select “ODBC Data Source”
 In the window “Select Data Source”, select the “Machine Data Source” tab, Highlight the source
 Click OK.

- Step 7. “Link Tables” should eventually appear
 Click “Select All”
 Click OK

At this point Access 97 may prompt you to select “Unique Record Identifier”. The following table lists the required Unique Record Identifier combinations. To select these, click each element once IN ORDER so it is highlighted Blue, before hitting OK.

Note: If you click one accidentally, click again to un-highlight.

Authorizers: YR + AC# + PFMPTR + AUTHPOS
 CrewData: YR + AC# + PTR + POS
 K:\laura\odbc\novell.doc

FBO:	FBOID
FLITELOG:	YR + AC# + PFMPTR
FLITELOG2:	YR + AC# + PFMPTR
PAXDATA:	YR + AC# + PTR + POS
PILOT:	CREW#

At this point all your tables should be available in Access 97. If you have any trouble, feel free to call PFM @ 610-668-1655.